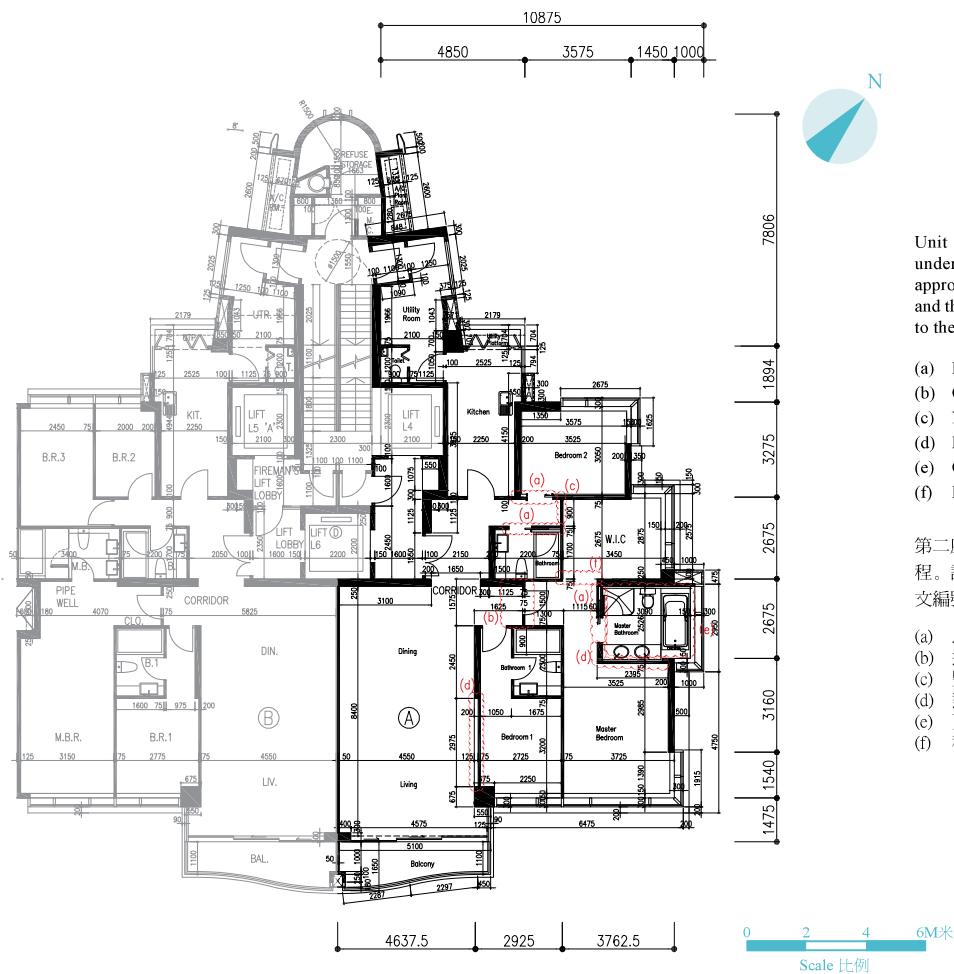


11 | FLOOR PLANS OF RESIDENTIAL PROPERTIES IN THE DEVELOPMENT

發展項目的住宅物業的樓面平面圖

Unit A on 33/F of Tower 2
Latest Floor Plan
第二座三十三樓A單位
現狀樓面平面圖

Tower 2 第二座



Unit A on 33/F of Tower 2 has been altered by way of exempted works under the Buildings Ordinance after completion of the Development. The approximate locations of the alterations are indicated on this latest floor plan and the details of the alterations are set out below (the below numberings refer to the marked alterations on the plan):

- (a) Replacement of swing door by sliding door
- (b) Original door has been relocated
- (c) New partition wall has been erected
- (d) Minor adjustment has been made to partition wall
- (e) Original fittings in the bathroom have been altered and relocated
- (f) Partition wall has been removed

第二座三十三樓A單位在發展項目落成後進行獲《建築物條例》豁免的工程。該等改動的位置於此現狀樓面平面圖中標出。該等改動列出如下(下文編號對應圖中改動編號):

- (a) 以趟門取代掩門
- (b) 遷移原有的門
- (c) 豎立新間隔牆
- (d) 對間隔牆略作修改
- (e) 更換及遷移浴室內原有的裝置
- (f) 移除間隔牆

Note 備註:

The dimensions on the floor plans are all in millimetre.
樓面平面圖所列之尺規為以毫米標示。