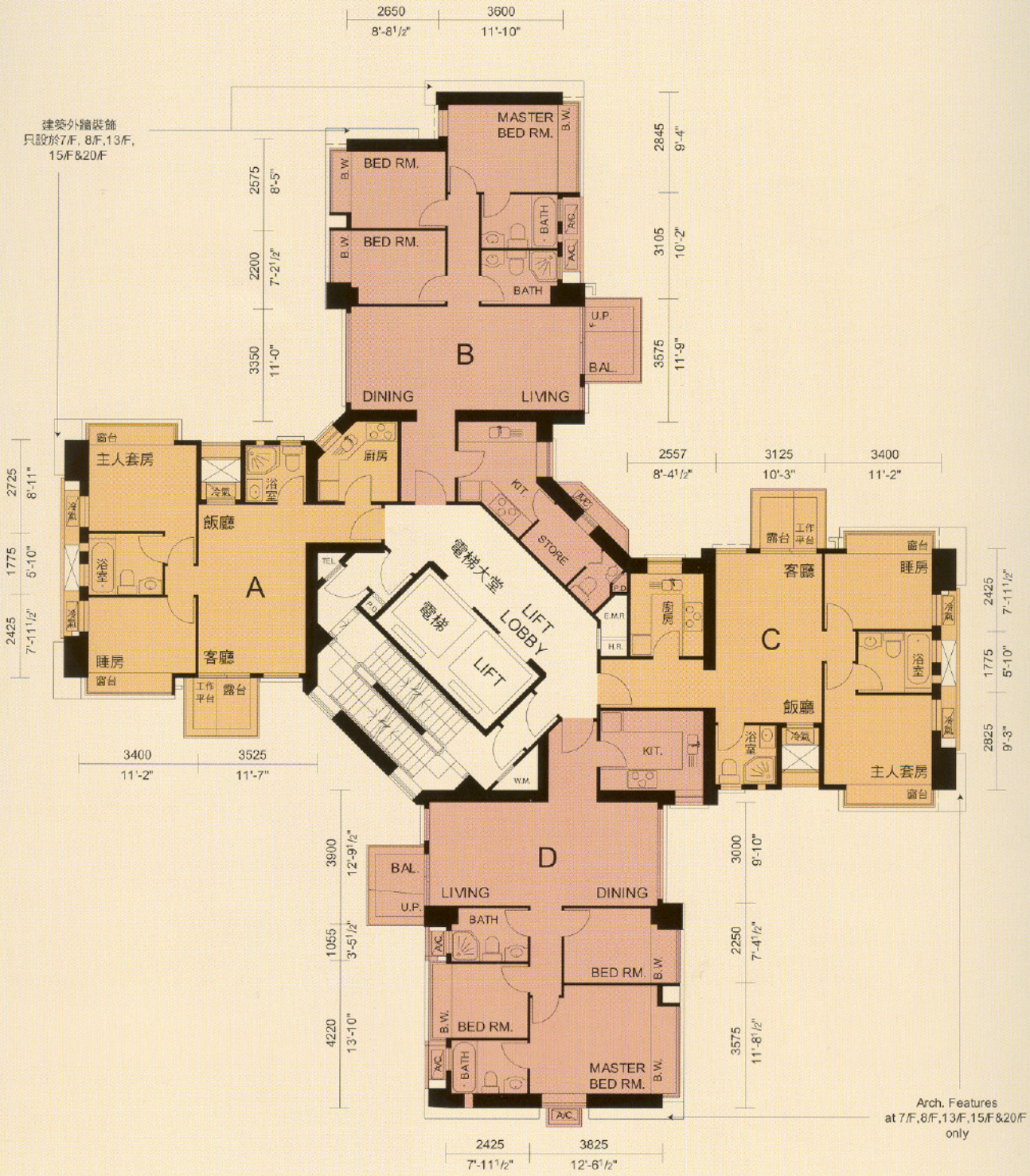


建築外牆裝飾
只設於7/F, 8/F, 13/F,
15/F&20/F



2725
8'-11"
1775
5'-10"
2425
7'-11 1/2"

2650
8'-8 1/2"
3600
11'-10"

2575
8'-5"
2200
7'-2 1/2"
3350
11'-0"

2845
9'-4"
3105
10'-2"
3575
11'-9"

2557
8'-4 1/2"
3125
10'-3"
3400
11'-2"

2425
7'-11 1/2"
1775
5'-10"
2825
9'-3"

3400
11'-2"
3525
11'-7"

3900
12'-9 1/2"
1055
3'-5 1/2"
4220
13'-10"

3000
9'-10"
2250
7'-4 1/2"
3575
11'-8 1/2"

2425
7'-11 1/2"
3825
12'-6 1/2"